

# **MEGA-STEAM™**

## **4000 SERIES**

**MULTIFUNCTIONAL-FULLY ADJUSTABLE STEAM CLEANER**



## **INSTRUCTION MANUAL**



# CONGRATULATIONS!

Thank you for your purchase of the STX Mega-Steam 4000-SX2 Steam Cleaner. Steam cleaning is one of the easiest, most eco-friendly, and safe ways to clean, sanitize, and deodorize many of your common household surfaces without harsh chemicals.

According to the Center for Disease Control and Prevention (CDC), temperatures above 167°F will kill most known household bacteria (i.e. e-coli, listeria, and salmonella), mold, mildew, influenza viruses, and bed bugs. Utilizing steam cleaning you can expect to sanitize and clean contaminated and filthy areas including the following:

- Soil-sealed flooring
- Shower Walls & Shower Heads
- Bath Tubs
- Sinks & Faucets
- Baby Changing Tables
- Range Vents & Hoods
- Remove/Sanitize Mold & Mildew
- Doorknobs
- Clothes - Sanitize & Remove Wrinkles
- Spot Clean Carpet & Area Rugs
- Steam Removal of Bed Bugs
- Glass Shower Doors & Runners
- Toilets & Bidets
- Stove Tops & Fronts
- Waste Cans
- Range Burners
- Tile & Grout
- Toys & Stuffed Animals
- Shoes
- Spot Clean Drapery & Pillows

## DISCLAIMER

This is **NOT** a Commercial Steam Cleaner. The STX Mega-Steam 4000 SX2 Steam Cleaner is specifically designed for household cleaning, deodorizing, sanitizing, bed bug removal and wrinkle removal. As is true for all steam cleaners of this size, tank capacity, wattage, and price range, you cannot expect it to handle commercial size activities like auto engine degreasing, grill cleaning, and such.

## CAUTION!

- Steam may result in bleaching of painted or varnished wood.
- Steam may discolor shiny plastics.
- Use caution when using steam with acrylic, linen, leather, silk, velvet, and any other surfaces that would be harmed by water.

# PRECAUTIONS

## READ ALL INSRUCTIONS PRIOR TO USE!

1. This steam cleaner is only for use with 110/120V. Do not use another high wattage appliance in the same outlet. This steam cleaner does not work on 210/220Volts.
2. Only use the original accessories and components for the Mega-Steam 4000-SX2 Steam Cleaner.
3. Use a GFI or GFCI grounded outlet.
4. Do not modify this unit in anyway. Do not use extension cords or any type of power adaptor.
5. Never operate this steam cleaner without filling the water tank to the correct level before use.
6. Disconnect the steam cleaner from the electrical outlet prior to filling, draining water, cleaning, or maintenance. Allow the steam cleaner to cool down so that no steam is present prior to refilling the water tank.
7. Ensure that the safety cap has been securely tightened prior to use. The safety cap is spring loaded and needs to be pushed down while tightening and untightening.
8. Only move the steam cleaner by the handle on the top of the unit. Do not drag the unit by the flexible hoses.
9. Only use distilled water with this steam cleaner. Tap water will cause a build up of calcium deposits in the tank. Do not use additives in the tank like alcohol, cleaning agents, or scenting agents as they will damage the unit.
10. Do not add more than 1.5 liters of water to the tank. This allows for adequate room in the tank for steam production. If the tank is too full, steam production will not happen. This will cause water to spray out instead of steam.
11. Please check fabric labels prior to using any steam cleaner. Some fabrics may be sensitive to high steaming temperatures. It is recommended to check the effect of steam cleaning on a small inconspicuous area of a fabric before full treatment.
12. Be careful not to touch any of the metal parts of the steam cleaner during use. Steam produced by this unit can reach temperatures greater than 220°F and can cause serious burns. Do not steam clothing when being worn by humans or animals. **Never aim this steam cleaner at a person, animal, or plant.** Scalding will occur. Do not aim steam at or near electrical cords, wires, or intact, functioning electrical outlets.

13. Do not tip the unit during operation or in any way cause water leakage from the water/steam tank.
14. Never attempt to unscrew the safety cap when the switch is in the ON position. Pressure is present and will cause hot steam/water to escape before cooling.
15. Do not immerse the appliance, power cord or plug in water. Keep the appliance away from rain and moisture. The steam cleaner is not designed for extensive outdoor use.
16. Condensation may form on the end of the accessory being used and is normal. The longer the accessory(ies) being used, the greater the chance for water condensation due to the cooling of the steam over distance. Residual hot water may be present in accessories, attachments and nozzles between refill/reheating times when the unit is turned off. Allow 5 to 10 minutes of cooling time prior to cleanup or contact with these pieces.
17. Do not place the steam cleaner or any of its components near an open flame, a cooking appliance while in use, or any other heating appliances.
18. Do not leave the steam cleaner unattended while in use or during the cool down period. Keep out of the reach of children and infants. Use the available child lock when children are present.
19. Do not unplug the power cord by pulling on the cord. Never unplug this unit with wet hands. Turn the unit to the OFF position prior to unplugging the steamer.
20. Regularly check the steam cleaner, power cord, and accessories for damage. Do not operate a damaged steam cleaner or operate a steam cleaner with damaged accessories or attachments. Do not operate the steam cleaner with a damaged power cord.
21. The steam cleaner has a temperature sensitive thermostat and will automatically shut off once the correct temperature has been achieved. The steam cleaner has an automatic pressure release valve that will activate when excessive pressure is detected. If the thermostat and the pressure release valve fail, the steam cleaner has a thermal cut-off function that will activate and shut off the power to the unit. If this occurs, unplug the steam cleaner and contact STX International Service Center (See Contact Information on the back of this manual).
22. Use the steam cleaner only as described in this manual. Other uses are not recommended and may cause fire, electrical shock, and damage to the unit and personal property of the user.

# PACKAGE CONTENTS

- 1 - Main Unit Steam Cleaner with Storage Compartment
- 1 - Steam Gun with 5' (60") Steam Hose
- 2 - Steam Extension Tubes
- 1 - Large Floor Brush Accessory
- 1 - Floor Brush Adapter
- 1 - Small Utility Steamer Accessory
- 1 - Window Squeegee Attachment
- 1 - Front Accessory Adapter (Part 1) (Located in Main Unit Storage)
- 1 - Back Accessory Adapter (Part 2)
- 1 - Small Nylon Brush (Located in Main Unit Storage)
- 1 - Small Metal Brush (Located in the Main Unit Storage)
- 1 - Small Bent Nozzle (Located in the Main Unit Storage)
- 1 - Package of Extra Red O-Rings (2 sizes)
- 1 - Package of Extra Clear O-Rings
- 5 - 100% Cotton Booties for Small Utility Steamer Accessory
- 3 - 100% Cotton Booties for Floor Brush Accessory

## TECHNICAL SPECIFICATIONS

Voltage:	110/120V - 60Hz
Power:	1500 Watts
Steam Pressure:	<0.8 MPa, 116 PSI
Tank Capacity:	2.0 Liters (1.5L water/.5L steam)
Rated Water Capacity:	1.5 Liters (approx. 50 ounces)
Steam Availability:	~80 min/tank
Heating Time:	10 minutes
Steam Flow	50 g/min
Temperature:	160°C
Fuse Switch:	240°C
Dimensions:	17.1"L x 10.6"W x 8.7"H
Weight:	9.26 lbs. (main unit)

# UNPACKING

1. Unpack the steam cleaner and all of its accessories. Check to ensure that all components are present. You may wish to keep the box and inner packing for storage and transportation. If there has been any damage during shipment, please contact STX International (See Contact Information on the back of the manual).
2. Some residual condensation may be present in the water tank due to quality control testing at the factory prior to shipping. This distilled water need not be removed and the unit is safe to use.
3. Please read the ENTIRE instruction manual prior to using.

## PARTS: ASSEMBLY & PURPOSE



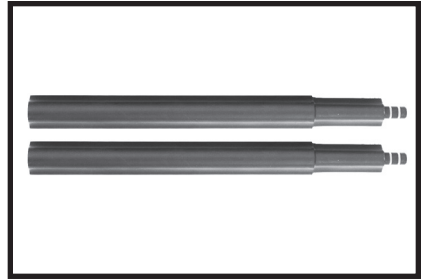
Main Unit with Accessory Storage Inside of Front Lift-Off Lid



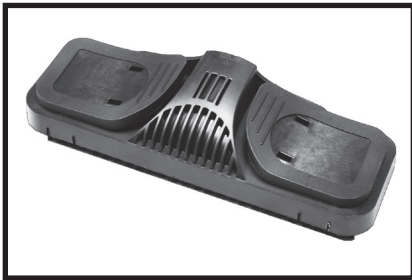
Control Panel – (L to R) Red Power LED, ON/OFF Button, Steam Flow Intensity Knob, & Green Steam-Ready LED



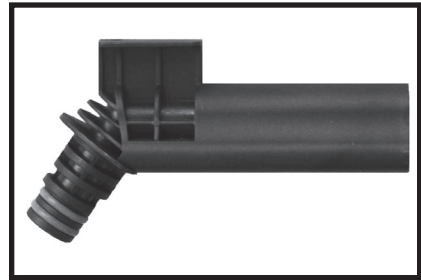
Steam Gun with Flex Hose



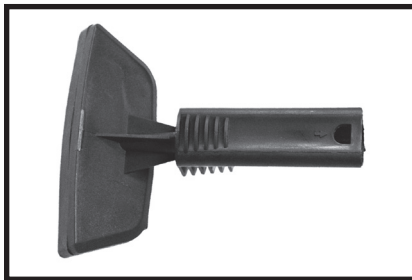
Steam Extension Tubes



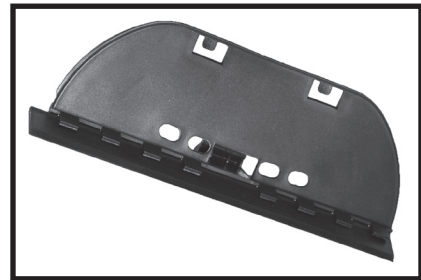
Large Floor Brush Accessory



Floor Brush Adapter



Small Utility Steamer Accessory



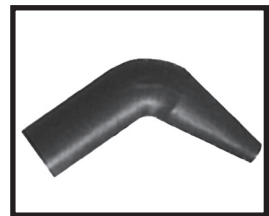
Window Squeegee Attachment



Small Nylon Brush

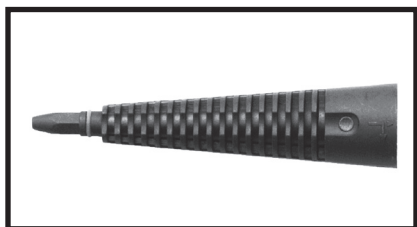


Small Metal Brush

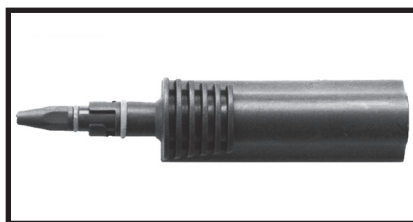


Small Bent Nozzle

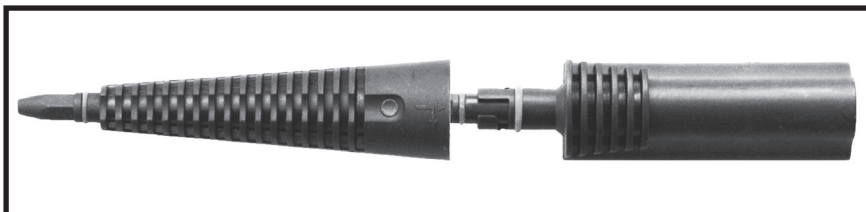




Front Accessory Adapter (Part 1)



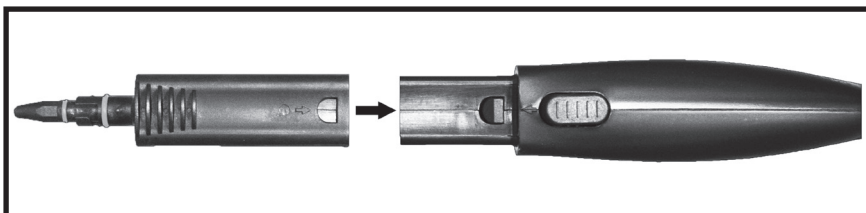
Back Accessory Adapter (Part 2)



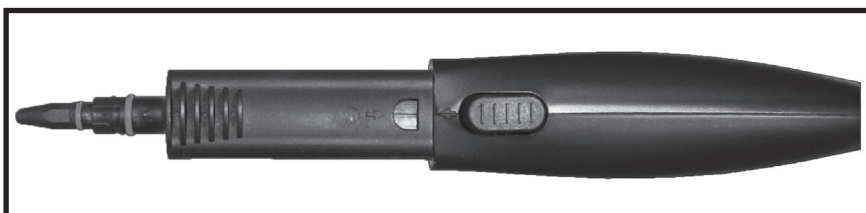
Assembly of Front Accessory Adapter (Part 1) to  
Back Accessory Adapter (Part 2)



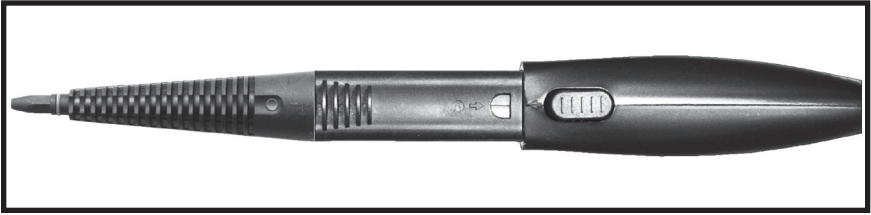
Complete Accessory Adapter Fully Assembled (Part 1 & 2)



Back Accessory Adapter Attaching to Steam Gun



Back Accessory Adapter Attached to Steam Gun



Complete Accessory Adapter Attached To Steam Gun



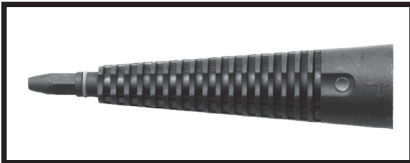
Small 100% Cotton Booties



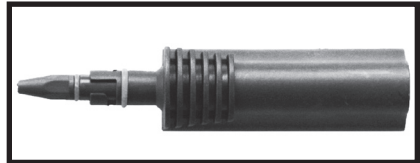
Large 100% Cotton Booties

## OPERATION & PREPARATION

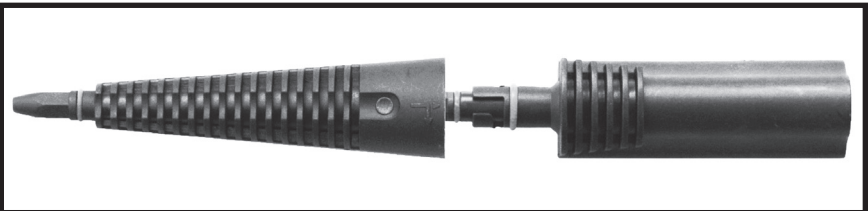
1. The steam hose, steam gun, and all desired accessories must be connected to the main unit prior to powering on the unit.
2. When using accessories except the large floor brush accessory and small utility steamer accessory, it is ALWAYS necessary to first connect the front accessory adapter (Part 1) to the back accessory adapter (Part 2). (See pictures below). These two components together make up the complete accessory adapter.



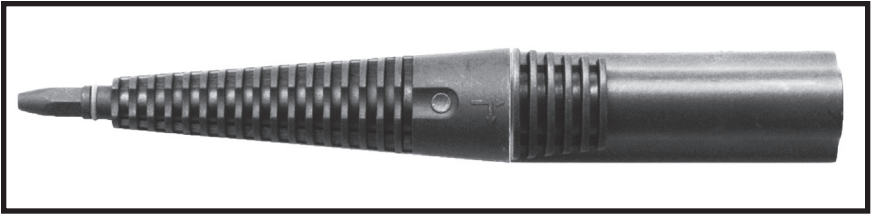
Front Accessory Adapter (Part 1)



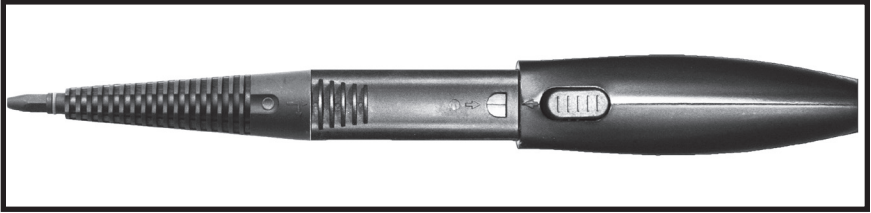
Back Accessory Adapter (Part 2)



The two accessory adapters lock by twisting clockwise approximately one-quarter turn. This is the Complete Assembled Accessory Adapter.



Then the Complete Assembled Accessory Adapter can be attached to the Steam Gun or to one of the Extension Tubes. Always ensure that the Accessory Adapters click into place so that they are firmly connected.



Complete Accessory Adapter Attached to Steam Gun

The bent nozzle, small nylon brush, and small metal brush can be attached to the complete accessory adapter for maximum steam cleaning, sanitizing, and deodorizing.

**PLEASE NOTE: PRIOR TO EACH USE**, ENSURE THAT THE O-RINGS ARE PRESENT TO ENSURE PROPER SEALING. Replacement O-rings have been provided in case of loss or damage occurs. Damaged or missing O-rings will cause water blow by and steam loss.

- Two extension tubes have been provided with the STX Mega-Steam unit. To attach the first extension tube to the steam gun, line up the hole in the extension tube with the push bottom locking mechanism on the steam gun - firmly and carefully push the two components together until they click into place. An additional extension tube can be attached to the initial extension tube the same way as the first tube was attached to the steam gun.

**NOTE:**

- To remove the extension tubes, just press the button on the extension tube or steam gun and carefully pull the two units apart.*
- The further steam travels through components, the more it cools. For maximum temperature effect, use the least amount of extension tubes as possible.*

4. The Small Utility Steamer Accessory- suggested uses: aggressive floor tile cleaner, window cleaner with squeegee attachment, garment steamer, etc

The small utility accessory attaches to an extension tube by aligning the locking mechanism on the extension tube with the hole on the small utility accessory and firmly connecting the two until they click together.

**NOTE:**

- *To remove the small utility accessory press the button on the extension tube and pull apart the units.*
- *Five cotton booties have been provided to cover the small utility accessory during use to control dripping.*

5. The small utility accessory can also be used to steam clean windows by attaching the window squeegee attachment. To attach the window squeegee attachment align the cleats on the window squeegee attachment with the corresponding receptacles on the small utility accessory (See pictures below). Snap the two pieces together.

**NOTE:**

- *To separate the two units grasp them and slightly pull on the snap attachment on the squeegee to free the squeegee from the small utility accessory.*



Window Squeegee Attachment



Window Squeegee Attachment  
Attached to Adapter

*TIPS for fabric steam wrinkle control, deodorizing and sanitizing:*

- *Check to ensure that fabric will not be damaged by high heat.*
- *Hold the garment or fabric with your hand or with a clothes hanger.*
- *Steam the garment or fabric with the steam gun starting at the bottom and working upward toward the top of the material without direct steam application to any one point for long periods of time. Be careful not to direct the steam toward your exposed skin. Scalding will occur if care is not taken.*
- *Gently tug at the base (the sleeves for example) of the garment intermittently to stretch out the wrinkles as needed.*
- *Collars may take additional steaming to control wrinkles.*

6. The Large Floor Brush Accessory - suggested uses: floor sanitizing & deodorizing, less aggressive floor tile cleaning, etc.

The floor brush accessory attaches to an extension tube via the floor brush adapter. To connect the floor brush adapter to the floor brush accessory locate and line up the arrows on each component. Insert the floor brush adapter into the floor brush accessory (See pictures below). Turn the floor brush adapter one-half turn (180°) to secure the two units together. The completed unit then can be attached to an extension tube as previously described.

**NOTE:**

- *To remove the floor brush accessory and floor brush adapter, simply reverse the process.*
- *Three large cotton booties have been provided to cover the bristles on the floor brush accessory, if desired. To place the large cotton booties, simply stretch the bootie over the brush end of the floor brush accessory and push down on the spring tabs on either side of the top of the floor brush accessory to secure the booties.*



Adapter & Floor  
Brush Accessory



Floor Brush  
Accessory Aligned to  
Adapter



Adapter Twisted  
to Fully Connect  
to Floor Brush  
Accessory

# OPERATION

1. Attach the flexible hose on the back of the steam gun to the front of the steam cleaner. Open the flap on the front of the steam cleaner while holding the hose connector with the arrow visible and pointing at the the steam cleaner opening. Press the hose connector firmly into the opening until it clicks into place (See pictures below).

*NOTE: To release the flexible hose, press in both release buttons on either side of the hose connector and pull the hose connector from the steam cleaner opening.*



Open Flap on Front of Main Unit & Hose Connector Ready to Insert



Hose Connector Attached to Main Unit

2. Prior to filling the steam cleaner with distilled water, ensure that the unit is NOT plugged into the outlet and is turned OFF. The safety cap is spring loaded and pressure sensitive. To unscrew the safety cap, press down on the cap and turn it counter-clockwise. Fill the tank with 1.5 liters of water (**DO NOT overfill!**). This will allow for adequate area in the tank for steam production. To close the safety cap, push down and turn clockwise until tight.

*Note: Monitor the water level in the tank and refill as necessary.*

3. Turn the steam flow intensity knob clockwise until it is tight. This turns the steam flow off. Once you are ready to begin steaming, you can adjust the intensity of the steam by turning this knob counter-clockwise to the desired steam intensity.
4. To refill the tank, turn OFF the main unit. Squeeze the steam trigger on the steam gun to release the residual steam, unplug the unit and allow it to cool for 15 to 30 minutes. The safety cap is designed to not open until the unit has cooled sufficiently. Once the unit has cooled, squeeze the steam trigger again to release any residual pressure. Return to step 2.

**CAUTION: Hot steam may escape while opening the tank! Care must be taken while opening and closing to prevent scalding!**

5. Select and attach the desired accessory (See previous section).
6. Plug the steam cleaner into an electrical outlet. Set the ON/OFF button to ON. The red LED will light up at this time. It takes approximately 10 minutes for the steam cleaner to produce super-heated steam. The green LED will light up when the unit is ready to operate.
7. Squeeze the trigger on the steam gun to check steam production and begin steam cleaning.
8. Monitor the steam production and water level. The green LED will turn off when the steam reservoir is depleted. If there is still plenty of water in the tank, release the steam gun trigger and wait 8-10 seconds for the steam reservoir to replenish. The green LED will light up again and you can continue steaming.

**NOTES:**

- *Adjust the steam flow intensity know counter-clockwise to get desired steam intensity.*
- *The length of time for continuous steam will vary based on how high the steam flow control knob is set. The higher it is set, the more often you will need to allow the unit to replenish the steam resevoir.*
- *For the first 3-5 seconds when you start the steam flow a small amount of water may be released. Water condensation occurs in the tank, flexible hose, and any attachments being used. This will quickly be replaced by 98% steam.*
- *The child lock yellow button on the steam gun will prevent the trigger from functioning when it is pressed.*

**TIPS:**

- *For best results, move the steam gun/accessory back and forth on the object being steamed rather than directing the steam at any one point for long periods of time.*
- *The flow rate of steam can be regulated with the steam flow control knob on the base of the steam cleaner.*

# CLEANING

Allow 15-30 minutes for the unit to cool when steaming is complete.

**This cooling period is necessary for operator safety.** The safety cap **WILL NOT** open until the tank has cooled completely. After this cooling period, squeeze the trigger to release any additional pressure prior to unscrewing the safety cap.

## Surface Cleaning:

1. Clean the housing of the steam cleaner with a dampened cloth.
2. Do not use cleaning agents, abrasives or alcohol on the housing.
3. Wipe off any excess moisture with a dry cloth.

## Tank Maintenance:

1. Clean the tank every 3 months.
2. Remove the safety cap.
3. Fill the tank with clean distilled water, rinse thoroughly, and drain the tank. Repeat this process 2 or 3 times for best results.
4. Allow the tank to dry completely prior to replacing the safety cap.

# STORAGE

- Always ensure that the unit is in the OFF power setting and disconnect the steam cleaner from the power source prior to any cleaning or storage.
- Prior to cleaning or storage, squeeze the trigger on the steam gun to release any pressure built up inside of the boiler tank.
- Allow proper cooling time of 15 to 30 minutes if the steam cleaner has been used recently.
- Unscrew the safety cap carefully at all times to prevent inadvertent hot steam release and scalding.
- Always allow the steam cleaner to cool down and dry completely before storing.
- Keep out of the reach of children at all times.



# TROUBLE SHOOTING

PROBLEM	POSSIBLE CAUSE	SOLUTION
The red LED fails to light.	The appliance is not plugged into an outlet.	Insert the plug into an outlet and turn the unit on.
	The appliance is not switched on.	Turn the unit on.
	The outlet is faulty.	Plug the steamer into different outlet.
	The power cord is damaged.	Have the power cord repaired.
No steam is emitting when operating.	The child lock is engaged.	Disengage the child lock.
	The water tank is empty.	Fill the tank with no more than 1.5 liters of water.
Very limited steam flow.	The steam flow control knob is set to minimal or low setting.	Turn the steam flow control to the desired level of steam flow.
	Missing or damaged O-rings.	Check and replace any damaged or missing O-rings.
Prolonged time to heat up.	The water tank has been clogged with calcium.	Remove the calcium build up and always used distilled water to prevent calcium damage.

# **GENERAL SAFETY RULES**

## **SAVE THESE INSTRUCTIONS!**

Refer to them often and use them to instruct others  
on the proper use of this product.

Read and fully understand all instructions and warnings prior to using this unit. Failure to comply with procedures and safe guards may result serious injury or property damage. Your personal safety is your responsibility!

1. **KEEP AWAY FROM CHILDREN AND PETS - THIS IS NOT A TOY!** Always monitor the unit while in use and never leave the unit plugged in around an unmonitored child/pet. Teach your children the proper respect for all electrical appliances. **YOU** are responsible for the safety of any children in the vicinity of this unit. **ADULT SUPERVISION IS REQUIRED AT ALL TIMES!**
2. Check for damaged parts prior to use. Check that all parts are operating properly and perform their intended functions. **DO NOT** use if the power cord is damaged or frayed, or if at any time the power cord becomes damaged or frayed or if the unit does not seem to be functioning as it normally has for you in the past.
3. **ALWAYS** disconnect this unit from the power source before servicing, changing accessories, cleaning or storing. Unplug the unit when it is not in use. **NEVER** plug this unit into an already damaged electrical outlet.
4. Make sure the power button is in the **OFF** position prior to unplugging from or plugging into an outlet.
5. **DO NOT** use sharp utensils (i.e. forks, knives, picks, tongs, etc..) inside any part of this unit. **DO NOT** modify this unit - This will void the warranty.
6. The manufacturer and seller of this unit do **NOT** assume **ANY** responsibility in the case of improper use of this unit or improper monitoring of this unit when in use. Improper use of this product voids all warranties/guarantees.
7. **ANY** type of major service must be done by STX International/Mercantile Station 2, LTD. Proof of purchase must be provided by consumer prior to any repair/service. The seller will use only factory original parts and accessories. Modification of the electrical or any other major component of this unit by the consumer voids the guarantee/warranty. (See Contact Information on back of this manual)
8. Do **NOT** pull the power cord to unplug, unplug by the plug end. Do **NOT** use extension cords with this appliance. Use of extension cords will **VOID** the guarantee/warranty.
9. To prevent electric shock do **NOT** immerse the main unit in water or liquid. Serious injury from electric shock could result. Do **NOT** operate near running water or in areas where condensation can collect.
10. Do **NOT** use under the influence of drugs or alcohol.

# STX **3-YEAR** WARRANTY *International*

All STX International Products come with a 3-Year Guarantee, valid only in the 48 Contiguous United States. If you purchase this product and ship it to a destination outside of the 48 Contiguous United States this warranty becomes null and void.

The first 30 Days are covered by a Money Back or Replacement Guarantee from the date of the receipt of the product. If your product becomes damaged in shipment or is found to be defective in any way during this period, we will replace or issue a complete refund for your product upon return. We will pay all shipping involved during this first 30-day period.

The remainder of the 3 Years (after the first 30 days) is covered by a FREE REPAIR Guarantee (parts and labor included). If anything becomes defective during this period we will fix the issue and provide a full service inspection to your product, shipping (to & from) will be paid by the buyer. Please email us at [Info@STXInternational.com](mailto:Info@STXInternational.com) to set up a service request.

## **Returns of New/Unused Products**

If you have Buyer's Remorse and decide that you do not want the product, it must be returned NEW & UNUSED in the original box and you will pay the return shipping. PLEASE NOTE: There will be a 10% Restocking Fee and original Shipping Costs (if applicable) will not be refunded. **Used product cannot be returned.**

## **How To Register Your Warranty**

Go to [www.STXInternational.com](http://www.STXInternational.com). Click on "Register Your Warranty" tab and fill out the form. This is a fully secure website. Your information will never be sold or misused in any way. This registration site is strictly for order verification that will be used to speed up the process should you ever need to use your Warranty for service.

STX International  
2159 Magnum Circle, Lincoln, NE 68522  
[Info@STXInternational.com](mailto:Info@STXInternational.com) • [www.STXInternational.com](http://www.STXInternational.com)

# **QUESTIONS, PROBLEMS OR COMPLIMENTS?**

*Thank You for purchasing this  
STX International Product!  
We are grateful for your business!*

All of our STX International Products are inspected then sealed with our NEW Product Seal prior to shipment.

Our goal is to ensure Quality, Completeness, and Satisfaction for your order.

**For Any Questions, Problems, or  
Compliments please call or email us.**



**Toll Free: 844-861-4762**



**Info@STXInternational.com**

Our Business Hours are:

Monday - Thursday: 8am - 4pm CST

Friday: 8am - Noon CST

If you would like to shop for other STX International Products

Please visit our website  
[www.STXInternational.com](http://www.STXInternational.com)

**STX**  
*International*